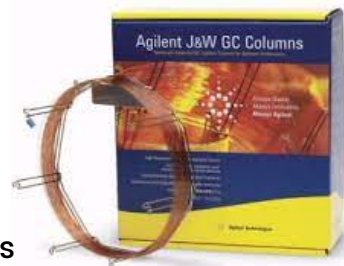


Analysis of FAMES, Fatty acids and Triglycerides

SUPER SALE

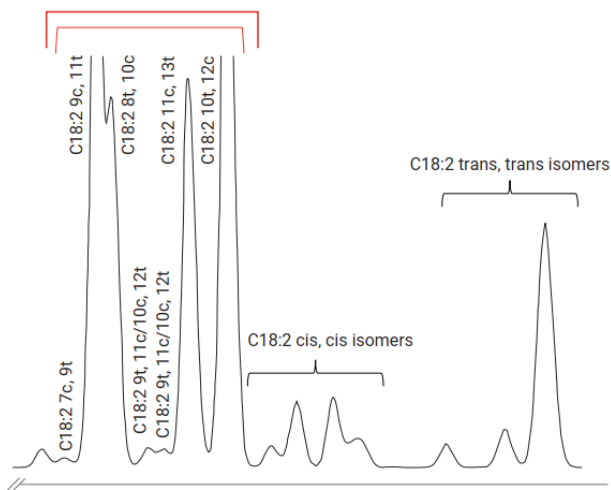
CP-Sil 88 for FAME



The best column choices for detailed analysis of positional cis-trans FAME isomers in the C6-C26 range.

- High-cyanopropyl phase
- Recommended for AOCS Ce (1j-07), AOAC (996.06) methods

Challenge separation of key CLAs
(only partial coelution of t8, c10-CLA)



Ideal column of choice for separating and quantitating CLA isomers in complex mixtures.

Conditions:

GC system: Agilent 6890
 Column: CP-Sil 88 for FAME, 100 m x 0.25 mm, 0.2 μm (p/n CP7489)
 Inlet: 260 °C, split mode
 Carrier: Helium, 30 psi
 Oven: 170 °C
 FID: 260 °C
 Injection: 0.5 μL
 Sample: Approx 2% of each FAME in TBME

Courtesy: Dr. Dahlke, Hamburger Fettchemie Brinckman & Mergell, GmbH

~~82,000 บาท~~
(exclude VAT)
เหลือเพียง
57,000
บาท (EXCLUDE VAT)

P/N CP7489

J&W CP-Sil 88 for FAME GC Column, 100 m, 0.25 mm, 0.20 μm, (USP G5)

สินค้ามีจำนวนจำกัด!

Lipid compounds Reference Standards

Highly purified lipid compounds both as individual standards and as model mixtures for the past 50 years

NU-CHEK PREP, INC.
 P.O. Box 295 Elysian, MN 56028 U.S.A.
The home of fine Lipid Organics

